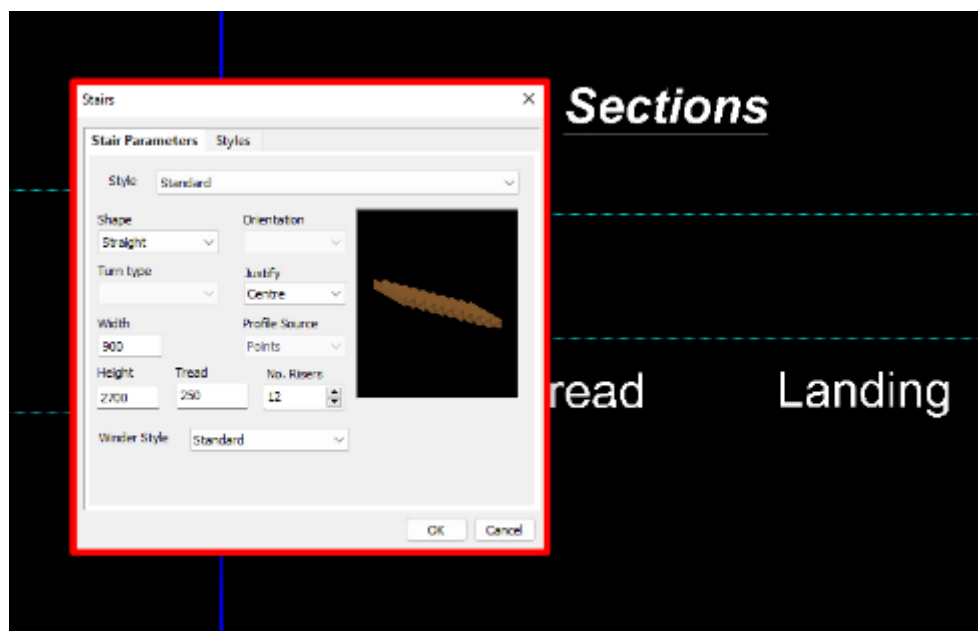
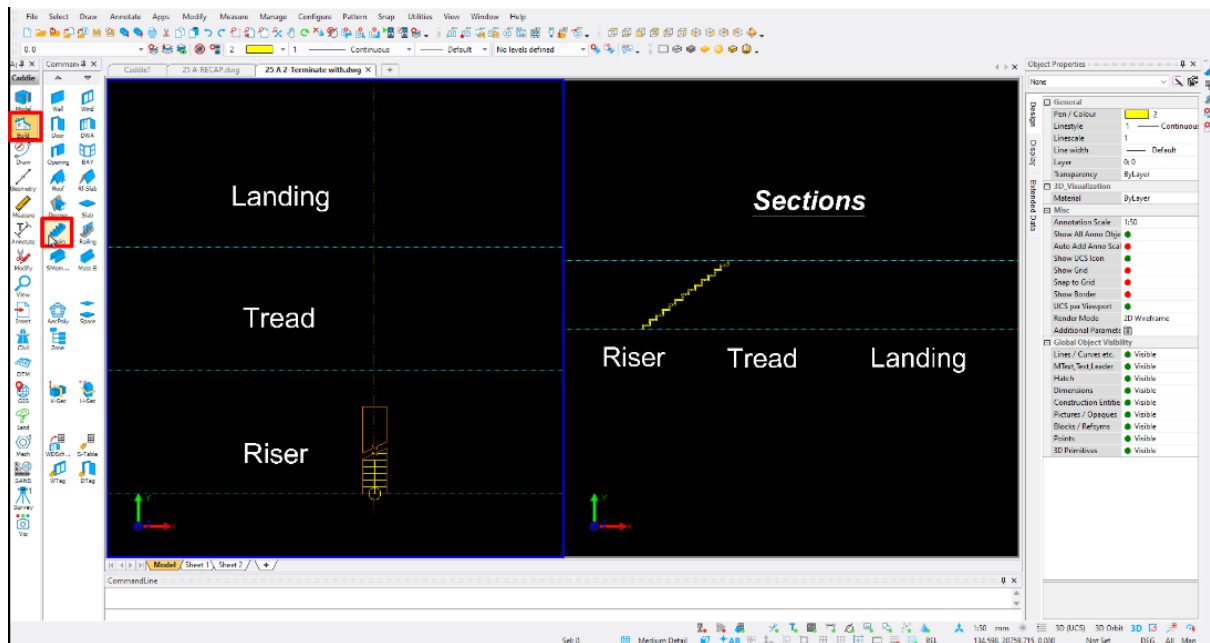


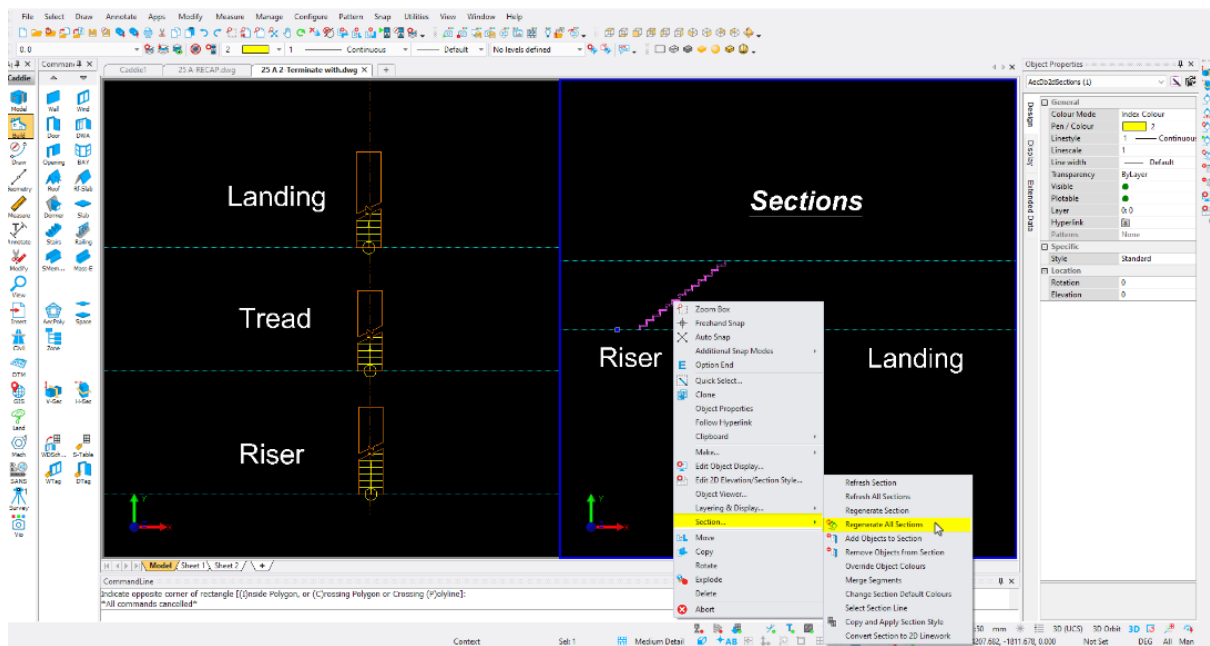
A Guide to Course Graphics

Throughout the course you will see different graphics used to highlight instructions or draw your attention to the area of the screen that is changing. This guide is designed to explain their use.

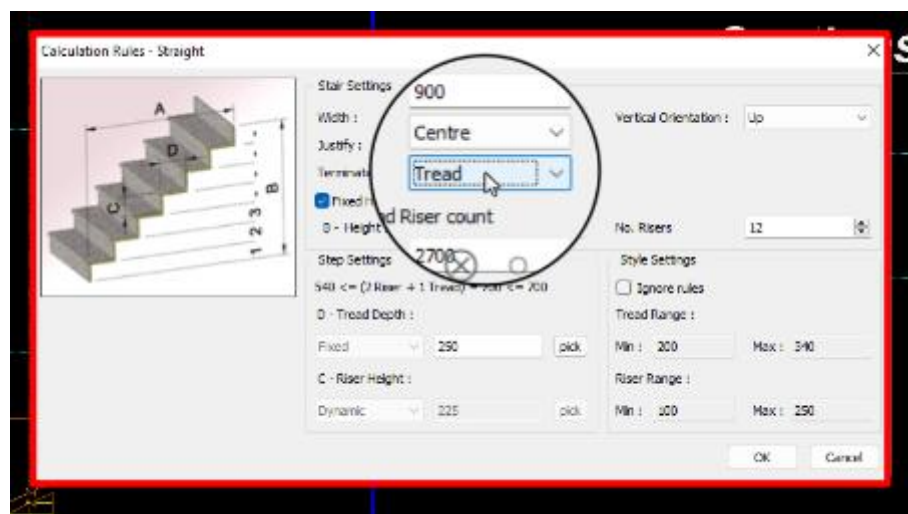
To help you follow the commands and Dialogues that are being used, red boxes are drawn around them, followed by yellow highlighting on the dropdown menus if the Top Menu is used.



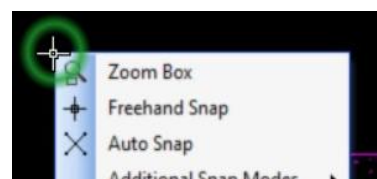
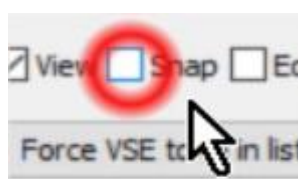
The Context Sensitive Menu is accessed by right clicking the mouse in the drawing area, only yellow highlighting is used in these menus.



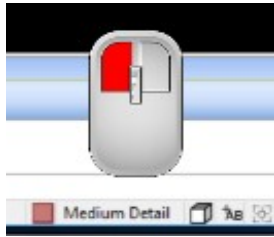
A magnification of the pointer may be used to show the detail of an icon or command that is being used or shown.



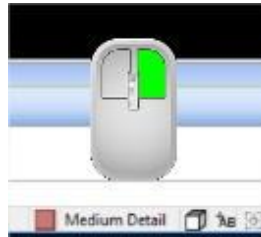
Mouse clicks are illustrated with a red circle for left click and a green circle for right click.



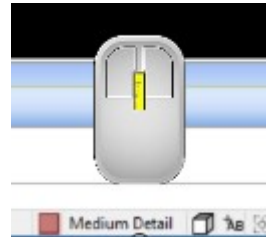
In addition mouse graphics may be used in some introductory courses for emphasis.



Left Click

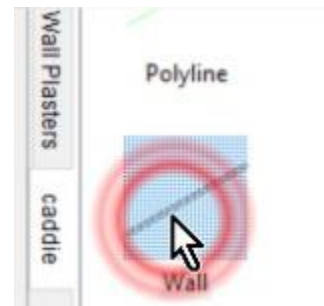
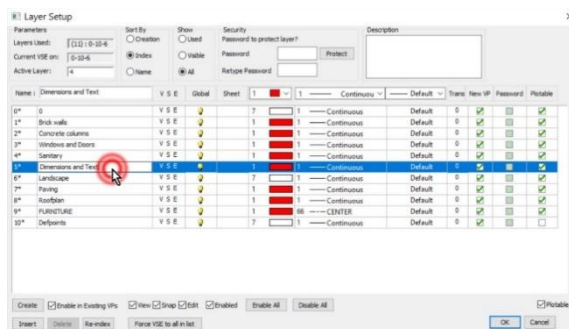


Right Click

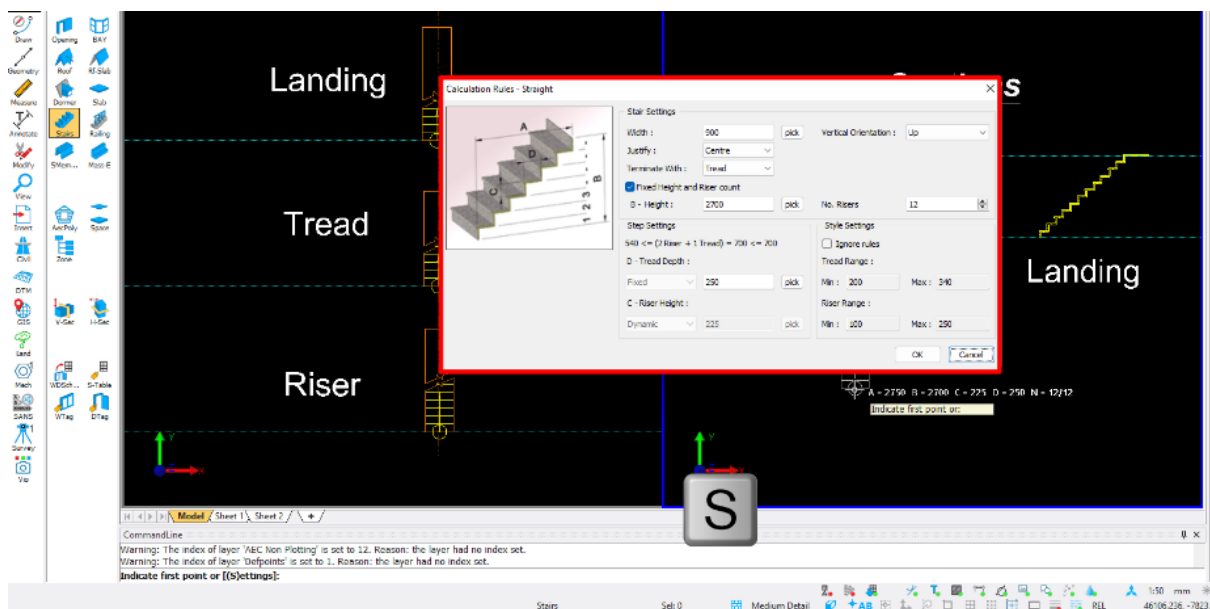


Scroll, click or hold down the mouse wheel

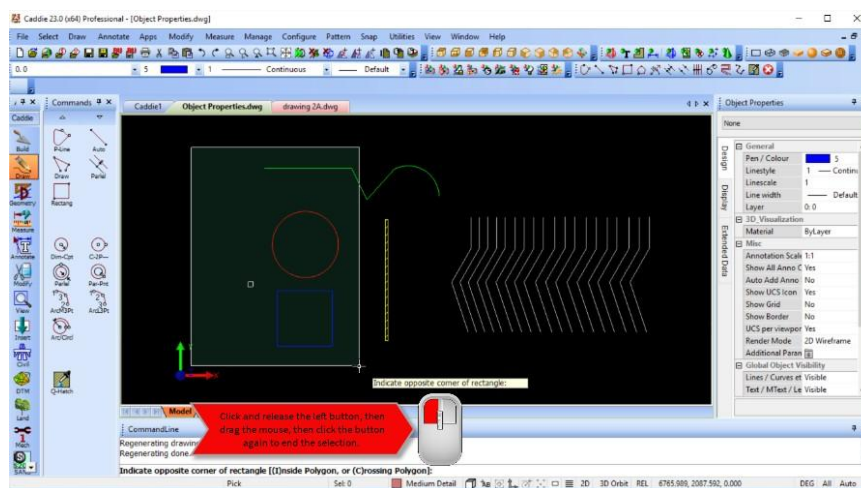
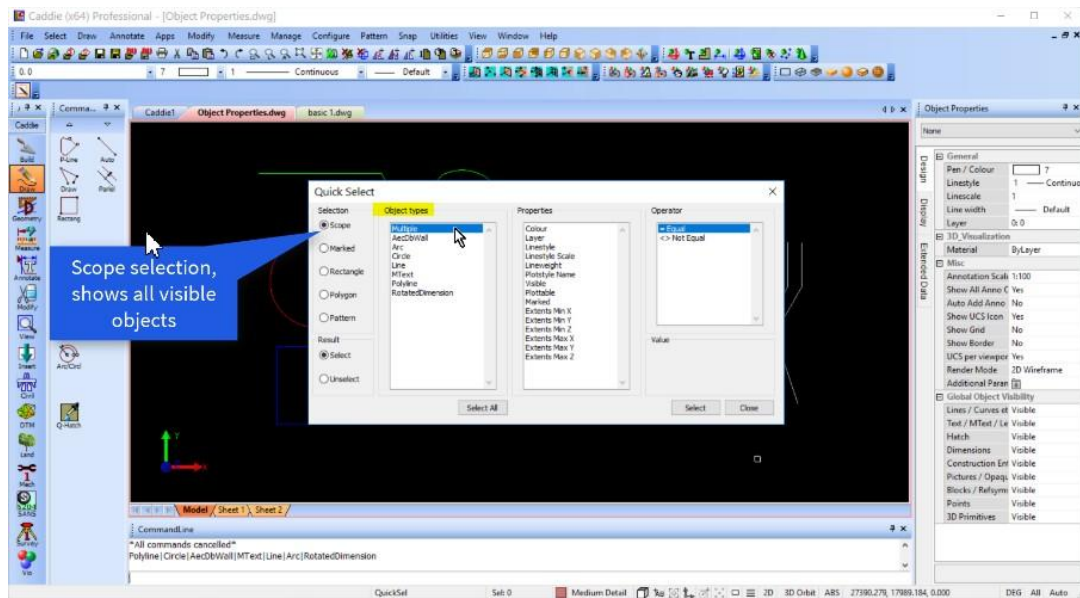
When double clicks are used you will notice a double line to the circle that illustrates the double mouse click



Keyboard shortcuts are displayed where they are used



Blue or red call out boxes may be used to add additional information.



Red boxes are also drawn to emphasis the demonstration, shown here around the Command Line and sometimes the Pointer Command Line prompt.

